

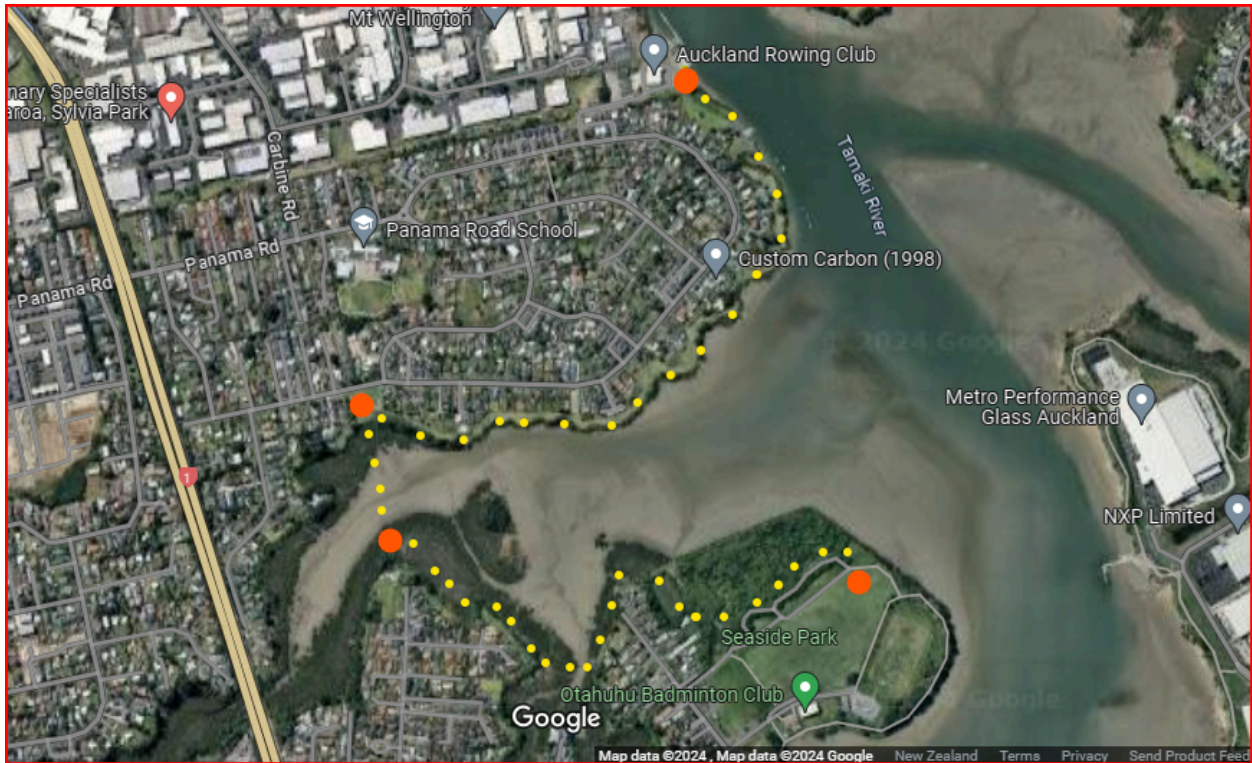
**Panama Riverside Friends Society
Incorporated**

Panama Road Greenways Plan

November 2023

Panama Riverside Friends Society Incorporated

Panama Road Greenways Plan - November 2023



Introduction

The Panama Riverside Friends Society Incorporated is pleased to present the Panama Road Greenways Plan, developed in consultation with the wider community through our community survey. This plan aims to create safe and enjoyable pathways for community members to navigate, engage with their surroundings, and promote active lifestyles while preserving and enhancing the natural environment.

Objectives

The Panama Road Greenways Plan seeks to achieve the following objectives:

- Enhance walking and cycling connections within the community.
- Provide recreational opportunities for residents of all ages.
- Promote ecological conservation and protection of natural habitats.
- Facilitate access to streams and waterways, honouring their cultural significance to the community in alignment with Te Ao Māori.

Development Process

The plan was developed using a thorough three-stage process, with feedback loops to ensure inclusivity and accuracy:

Phase One - Drafting the Network:

- Conducted a comprehensive stocktake of all related projects planned by other stakeholders.
- Defined the term "greenway" specific to the Panama Road area.
- Identified and drafted the initial network of greenways based on community input and feasibility assessments.

Phase Two - Analysis and Checks:

- Utilised Geographic Information System (GIS) data mapping to integrate all relevant information.
- Conducted on-site checks to ground truth the draft network, ensuring alignment with physical terrain and community needs.

Phase Three - Refining the Network:

- Reviewed the draft network with the project team to identify areas for improvement and refinement.
- Engaged in public consultations to gather feedback and incorporate community preferences and priorities.

Key Components of the Plan:

The Panama Road Greenways Plan encompasses the following key components:

Walking Connections: Establishment of safe and accessible pedestrian pathways connecting key community destinations such as schools, parks, and residential areas.

Cycle Connections: Development of designated cycling routes to promote active transportation and connectivity between neighbourhoods.

Recreation Opportunities: Integration of green spaces and recreational facilities along the greenways, including picnic areas, playgrounds, and fitness stations.

Ecological Opportunities: Implementation of strategies to protect and enhance natural ecosystems, including native plantings, habitat restoration, and wildlife corridors.

Access to Streams and Waterways: Creation of pathways and viewing platforms to facilitate community access to streams and water bodies, acknowledging their cultural significance and fostering environmental stewardship.

Conclusion

5

The Panama Road Greenways Plan represents a collaborative effort to enhance the liveability and sustainability of the Panama Riverside community. By prioritising safe and accessible pathways, promoting active lifestyles, and preserving the natural environment & the communities' deeper connection to Te Ao Māori, the plan seeks to create a vibrant and resilient community for generations to come.

We extend our gratitude to all community members who contributed to the development of this plan, and we look forward to implementing its recommendations in partnership with stakeholders and decision-makers.

For further information or inquiries, please contact the Panama Riverside Friends Society Incorporated.

Nga mihi nui,

Panama Riverside Friends Society Incorporated